

10 ÷ 30 MC VERTICAL SILO



DESCRIPTION

FAMA **vertical silos** are storage tanks for swarf accumulation. They are designed and sized to contain an adequate quantity of material in order to optimise swarf disposal operations. The dimensions of the silo are established based on production requirements, and are normally sufficient to contain at least one week of production. The height of the columns of the support structure is established based on the height of the truck container. The **vertical silos** are specially designed for outdoor installations, for situations where it is preferable to place the silo against a wall and to let trucks pass on the side of the silo.

Due to their conformation and double discharge, it is possible to divide the FAMA **vertical silos** into two parts, so as to be able to manage two different materials with a single silo. The swarf containment tank undergoes a sandblasting and painting cycle with organic zinc plating, while the support structure is completely hot galvanized. The silo is equipped with a controlled double opening door which, together with the self-braking motor, guarantee a certain security against theft and a safe and correct unloading procedure, allowing perfect dosing and distribution of the swarf on the truck. The material can be loaded in the silo in two different ways: by mechanical conveyor or pneumatic transport

FAMA **vertical silos** are available in different volume sizes, normally ranging from 10 m³ to 30 m³. Corresponding to 10 and 30 tonnes of material Load cells are recommended to be certain of the loaded weight.

SUPPLY

- Silo tank made in robust reinforced and painted metalwork
- Plates and backplates with anchor rods
- Vertical ladder with protective grate guard and padlocked door
- 2 rotative level sensors, one for almost full pre-alarm and one for full alarm
- Hammer vibrators to facilitate unloading of the swarf when packed
- Automatic doors with geared motor of adequate power to unload the swarf
- Silo inspection platform
- Support structure certified CE UNI 9010 with certification of the origin of all the materials of the bearing structure
- Constraint reactions at the foot to be used to make the silo foundations
- Electrical control panel
- Door opening pushbutton panel enabled from main panel.

OPTIONAL

- Electric control panel with key switch to enable pushbutton panel located near the silo
- Load cells for weighing
- Silo load belt
- Distributor belt
- Swarf load air breather chimney
- Designed to couple the sample weights
- Customisation of constraint reaction and seismic action calculations to be sent to competent local authorities signed and stamped by a professional enrolled in the register of engineers (after reception of the client's geological report). according to Italian Ministerial Decree. No. 8 17 January 2018 and circular no.7 of 21/01/19

FAMA RESERVES THE RIGHT TO MAKE CHANGES TO THE PRODUCT WITHOUT NOTICE

Uffici e Produzione/Offices and production site: Via Moraro, 19 - 36030 Montebelluna Precalcino (VI) Italy - Tel.+39 0445 363950 fax +39 0445 386068

Sede Legale/ Registered office: Via S. Antonio,11- 36030 Fara Vicentino (VI) Italy C.F./P.I.: IT 02290490248 Cap. Soc. € 100.000,00 R.E.A. VI 220095

www.famaproject.com e-mail info@famaproject.com

10 ÷ 30 MC VERTICAL SILO

TYPE	DIMENSIONS	POWER	VOLTAGE	LOADING	UNLOADING POSITION
VERTICAL	10 ÷ 30 mc	3 kW	230/400 V	CONTINUOUS	LATERAL

SILO CAPACITY

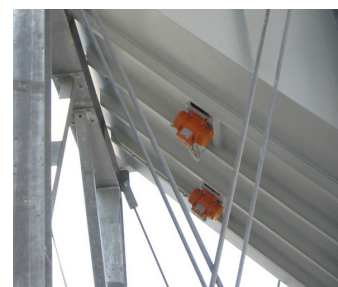
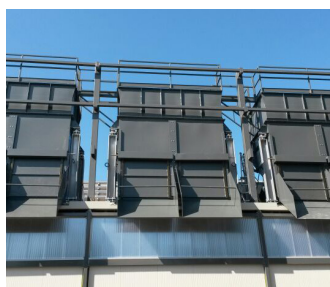
SILO CAPACITY	BRASS	STEEL	ALUMINIUM	STAINLESS STEEL	COPPER	CAST IRON
10 mc	8000	10000	5000	9000	8000	10000
20 mc	16500	20000	10000	18000	16000	20000
30 mc	25000	30000	15000	27000	24000	30000

The data in kg are approximate and in any case depend on the density and shape of the swarf

TECHNICAL SPECIFICATIONS

The dimensions of the silo are established on the basis of production requirements, normally suitable to contain one week of production or more. The height of the columns of the support structure are determined based on the height of the truck container.

The swarf containment tank undergoes a sandblasting and painting cycle with organic zinc plating, while the support structure is completely hot-dip galvanised. The silo is equipped with a double door, to ensure a safe and correct unloading procedure, allowing perfect dosing and distribution of the swarf on the truck.



TECHNICAL SPECIFICATIONS

- The support structure is accompanied by a certified structural calculation report
- The anchor bolts to fix the silo to the ground must be drowned in concrete. Depending on the type of soil, it is possible to build plinth or ground beam foundations
- If the silo is placed on an existing floor, it must bear the full load of the silo on the four support points

LOADING METHOD

The silo can be loaded with two methods: by mechanical channel or by pneumatic system. The first is a concave vane channel moved by chains, driven by a geared motor. The second is a system that uses the speed of the air inside pipes, generated by a displacement pump, to push the swarf inside the silo. If the silos are coupled, they can be loaded individually or connected by a distributor channel which is automatically activated when the first silo is full.

FAMA RESERVES THE RIGHT TO MAKE CHANGES TO THE PRODUCT WITHOUT NOTICE

Uffici e Produzione/Offices and production site: Via Moraro, 19 - 36030 Montecchio Precalcino (VI) Italy - Tel. +39 0445 363950 fax +39 0445 386068

Sede Legale/ Registered office: Via S. Antonio, 11 - 36030 Fara Vicentino (VI) Italy C.F./P.I.: IT 02290490248 Cap. Soc. € 100.000,00 R.E.A. VI 220095

www.famaproject.com e-mail info@famaproject.com