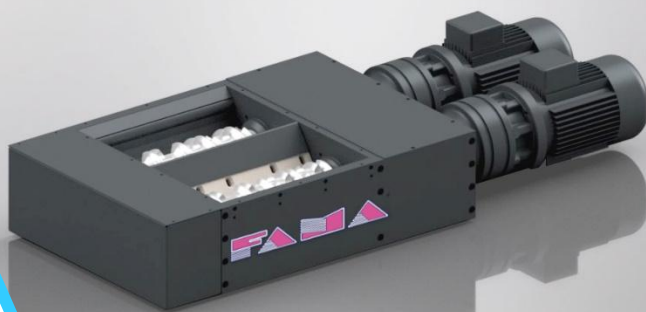


REV
0.0

TRA SHREDDERS

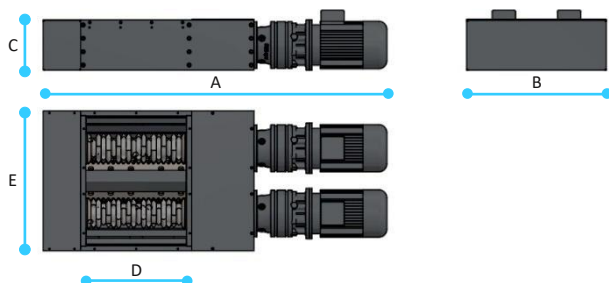
TRABI400

COMMERCIAL SHEET



TECHNICAL DATA

POWER	6 kW
TENSION	230/400 V
NUMBER OF BLADES	36
RPM	50



DIMENSION

A - LENGHT	1360 mm
B - WIDTH	560 mm
C - HEIGHT	240 mm
D - LOADING PORT	400 mm
E - LOADING PORT	480 mm

DESCRIPTION

The TRABI400 shredder is a machine designed to shred long and coiled metal swarf and to manage at the same time, through an automatic expulsion system, the presence of parts inside the swarf, without compromising the integrity of the blades.

The shredder is equipped with two slow rotating shafts moved by motors of adequate power on which a set of easily replaceable hooked blades is mounted, which, by crossing a counter-comb blade, create the cutting effect.

An interchangeable screen is installed below the shafts which, depending on the size of the openings, defines the size of the shredded swarf and therefore the hourly output of the shredder.

The reduction efficiency of the swarf volume and the hourly output of the TRABI400 shredder can be evaluated with experimental tests on your swarf at the headquarters of the company FAMA s.r.l.

HOURLY PRODUCTION

Q = 0,2 m ³ /h	BRASS	STEEL	ALUMINIUM	STAINLESS STEEL	COPPER
Δ DENSITY [kg/dmc]	0,45 ÷ 1	0,50 ÷ 1	0,15 ÷ 0,30	0,40 ÷ 1	0,25 ÷ 1
Kg/h	190 ÷ 400	200 ÷ 400	60 ÷ 140	160 ÷ 400	100 ÷ 400

THE DATA IN kg/h IS APPROXIMATE AND IN ANY CASE DEPENDS ON THE DENSITY OF THE SWARF, THE SHAPE, THE TYPE AND THE THICKNESS. THE DENSITY VALUES CONSIDERED ARE HYPOTHETICAL, BASED ON AN EXPERIMENTAL AVERAGE OF THE DATA IN OUR POSSESSION. PRIOR TESTS CAN BE PERFORMED.

FAMA s.r.l. reserves the right to make changes to the product without notice