



REV  
1.0

# CENTERFILTER

## SALES SHEET



FILTRATION UNIT

### DESCRIPTION

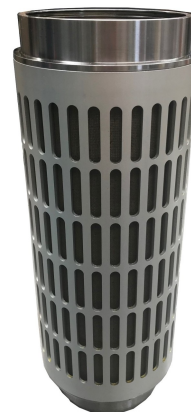
The **CENTERFILTER** control unit is designed and built for the filtration treatment of contaminated oils and lubricating-coolants, resulting from chip removal machine tools processing. Through a centrifugal pump, the contaminated coolant present in the machine tool is sent inside the **CENTERFILTER** where is present a self-cleaning filter cartridge, built according to specific needs: the filter elements are in fact designed according to the type of coolant and contaminants to be treated. The outflow of the coolant is continuous. The **CENTERFILTER** control unit guarantees a constant flow of the filtered coolant to the machine tool, preserving the longevity of the mechanical parts, cutting tools and high and low pressure pumps. Filter cleaning and sludge evacuation take place automatically. The small size of the **CENTERFILTER** control unit makes it suitable for machine-side applications.

### SUPPLY

HOLDING TANK  
FEEDING PUMP  
FILTER BODY  
ELECTRICAL PANEL

### OPTIONAL

HIGH/LOW PRESSURE PUMP  
MAGNETIC PURIFIER  
COOLING SYSTEM



FILTERING ELEMENT

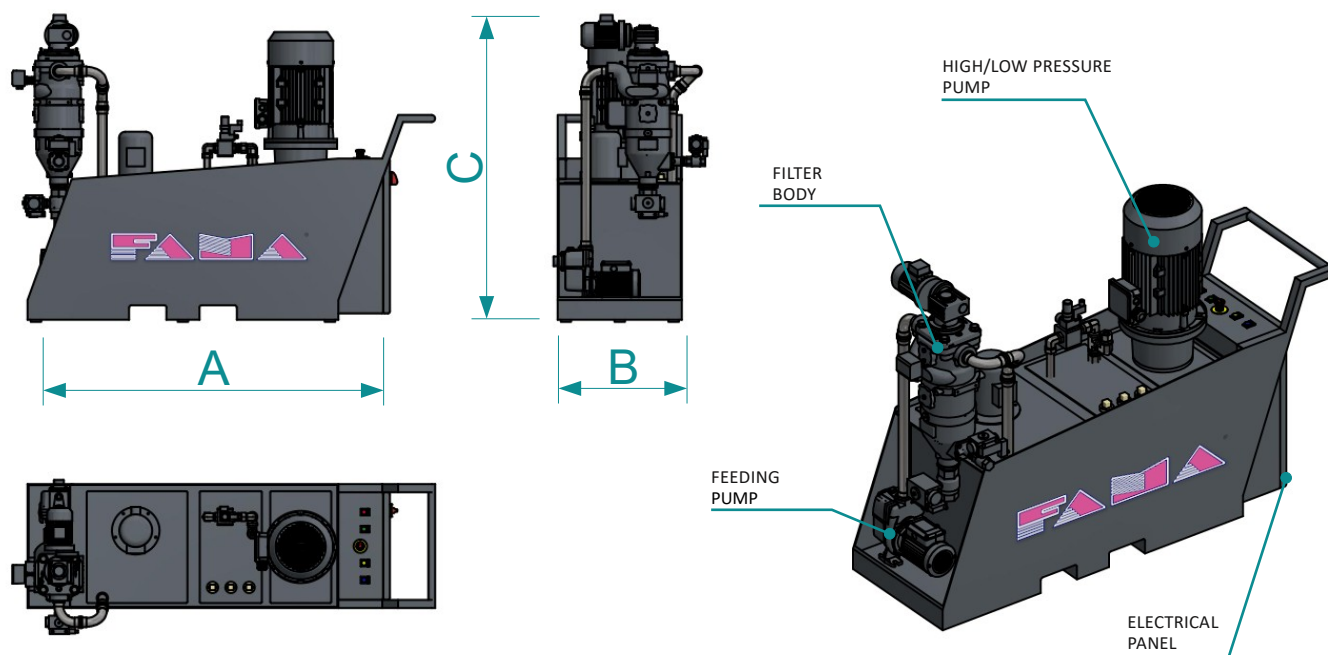
**TESTS CARRIED OUT WITH 22 Cst OIL, 4% EMULSION**

MODEL	AF 50	AF 100
<b>FILTRATION RATE [µm]</b>	40 ÷ 10*	40 ÷ 10*
<b>OIL FLOW 22Cst [l/min]</b>	70**	150**
<b>EMULSION FLOW 4% [l/min]</b>	100**	250**
<b>STORAGE CAPACITY [l]</b>	300	300

\* THE DEGREE OF FILTRATION DEPENDS ON THE FILTER ELEMENT USED

\*\*THE FLOW OBTAINED IS INDICATIVE AND IN ANY CASE DEPENDS ON THE VISCOSITY OF THE FLUID AND THE ENVIRONMENTAL CONDITIONS OF APPLICATION (EXTERNAL TEMPERATURE, OIL TEMPERATURE). FURTHERMORE, THE FLOW RATE VALUES ARE AFFECTED BY THE DEGREE OF FILTRATION REQUIRED AND BY THE PARTICULATE PRESENT (EX. CAST IRON, STEEL, BRASS)

IT IS POSSIBLE TO PERFORM TESTS AT THE FAMA SRL HEADQUARTERS ON YOUR SPECIFIC SAMPLE


**OVERALL DIMENSIONS**

	<b>AF50</b>	<b>AF100</b>
A - LENGHT [mm]	1600	1700
B - WIDHT [mm]	400	600
C - HEIGHT [mm]	1200	1500

**TECHNICAL DATA**

TOTAL WEIGHT [Kg]	350 kg
TOTAL POWER [kW]	3 ÷ 11
ELECTRICAL SUPPLY [V]	400 – 50 Hz
COMPRESSED AIR	6 bar
FLOW [l/min]	70 ÷ 250
FILTRATION RATE [µm]	40 ÷ 10